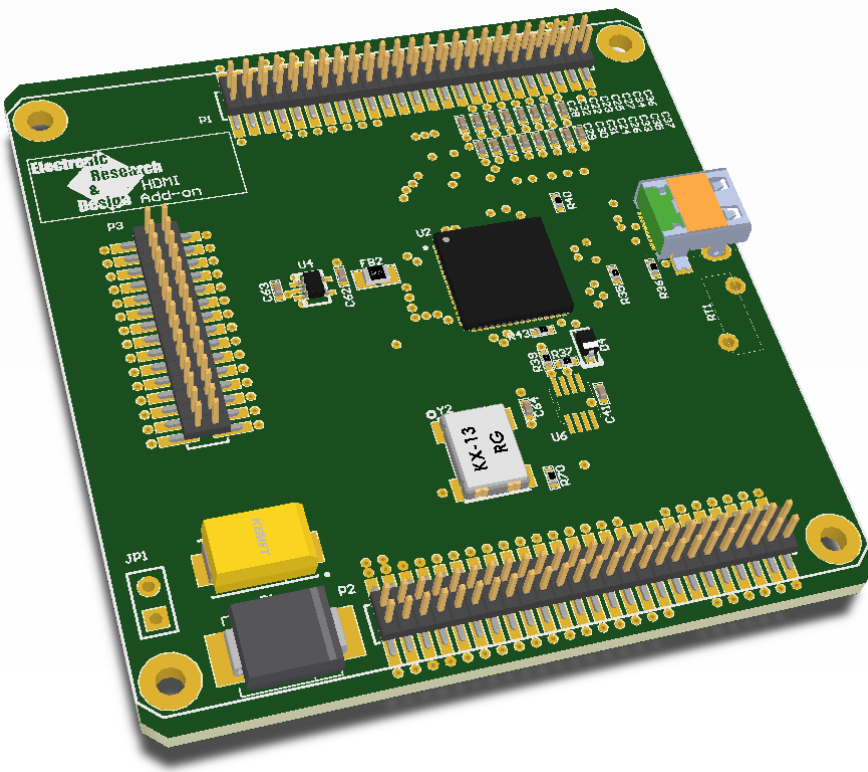




HDMI Stacker Board

The HDMI Stacker Board is an add-on for the Cherry Blossom System On Module.



It has the following features:

- Compatibility with Beaglebone Black HDMI.
- Micro HDMI connector.
- Stackable design.

Linux paid support available:



To order the board (and related stacker boards), please contact:



53-57 Yaldwin Road

Hughs Ext

Jetpark, 1459

South Africa

Tel: 011 923 9600

Mail: info@arrow.altech.co.za

•