



ERD

ELECTRONIC RESEARCH & DESIGN

PO Box 11475

Swartkops, 0051

Tel: 012 663 6930

Fax: 086 663 6930

Email: george@erd.co.za

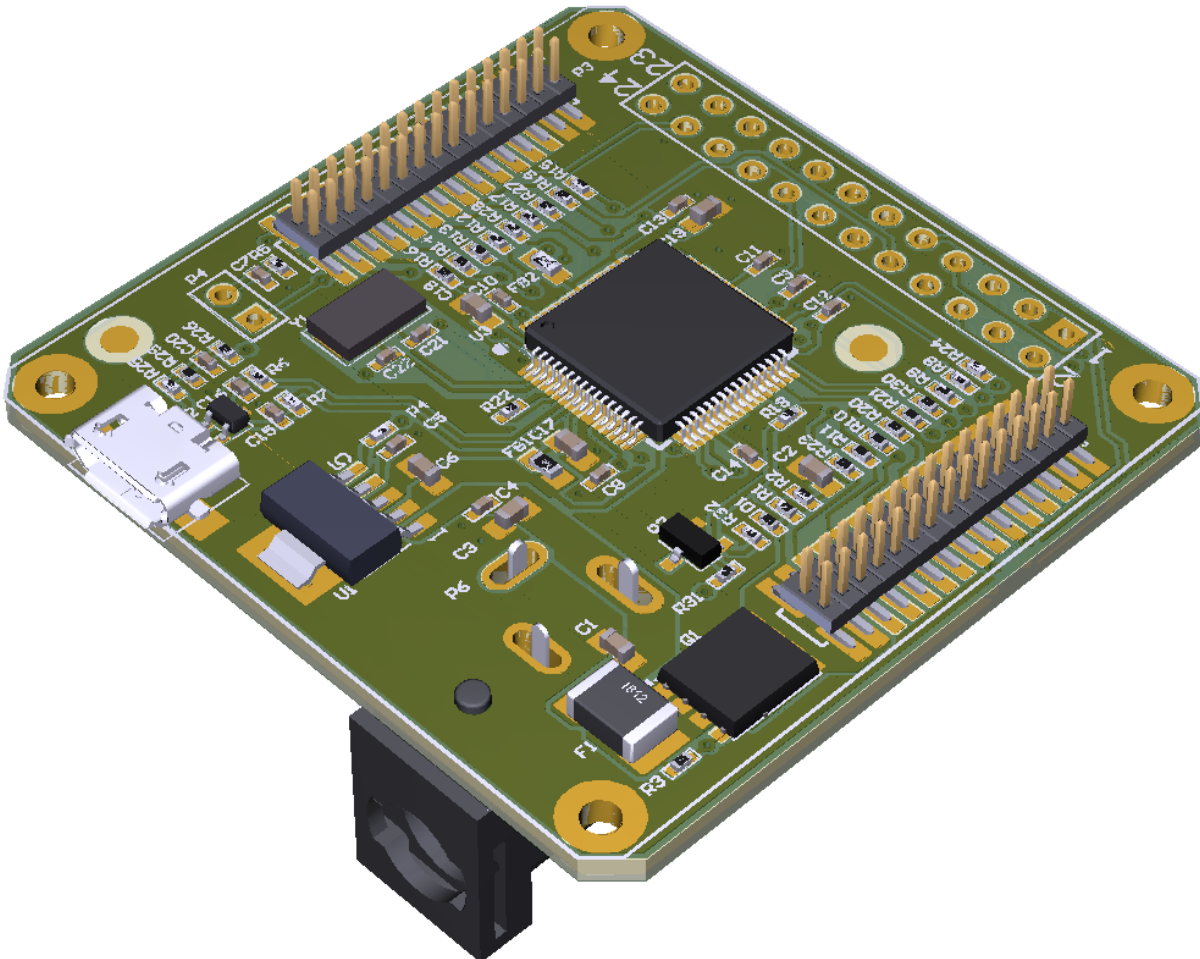
Reg no: CK96/20530/23

VAT no: 4890166012

Member: George Cerff

ERD Stealth Radar Baseboard Module

The ERD Stealth Radar Baseboard Module is an add-on for the ERD ERD Stealth Radar Module to facilitate easy prototyping. The unit fits on the back of the ERD Stealth Radar Module and exposes a DC Jack for power supply and USB port for serial communications.





It has the following features:

- DC Jack for Power (5V 1A – Centre pin positive)
- USB Micro B connector :
 - Quad USB to serial port.
 - 3rd Port is for Command - set for 115200 baud.
 - 4th Port is for Data – set to 921600 baud.



Pinouts

The pinout for the various connectors are:

P2:

Pin	Name	Pin	Name
1	GND	2	GND
3	GND	4	GND
5	ADC2	6	ADC1
7	ADC3	8	ADC4
9	GPIO_31	10	NRST
11	GPIO_32	12	GPIO_33
13	GPIO_34	14	GPIO_36
15	GPIO_35	16	GPIO_38
17	RS232_RX	18	GPIO_37
19	RS232_TX	20	ERROR_OUT
21	ERROR_IN	22	TDI
23	TMS	24	WARMRST
25	TCK	26	SOP2
27	TDO	28	GPIO_48
29	GPIO_47	30	PMICOUT_3V3

P1:

Pin	Name	Pin	Name
1	GND	2	GND
3	GND	4	GND
5	GND	6	GPIO_46
7	GND	8	GPIO_42
9	GPIO_45	10	GPIO_44
11	GPIO_43	12	GPIO_1
13	GPIO_39	14	SPI_A_CLK
15	SPI_A_MOSI	16	SDA_B
17	SPI_A_MISO	18	GPIO_0
19	SPI_B_CS	20	MSS_UARTB_TX
21	SPI_A_CS	22	SCL_B
23	ADC5	24	GPIO_40
25	GPIO_41	26	ADC6
27	5V_IN	28	5V_IN
29	5V_IN	30	5V_IN



To order the board (and related stacker boards), please contact:

ALTRON | **ARROW**

53-57 Yaldwin Road

Hughs Ext

Jetpark, 1459

South Africa

Tel: 011 923 9600

Mail: info@arrow.altech.co.za