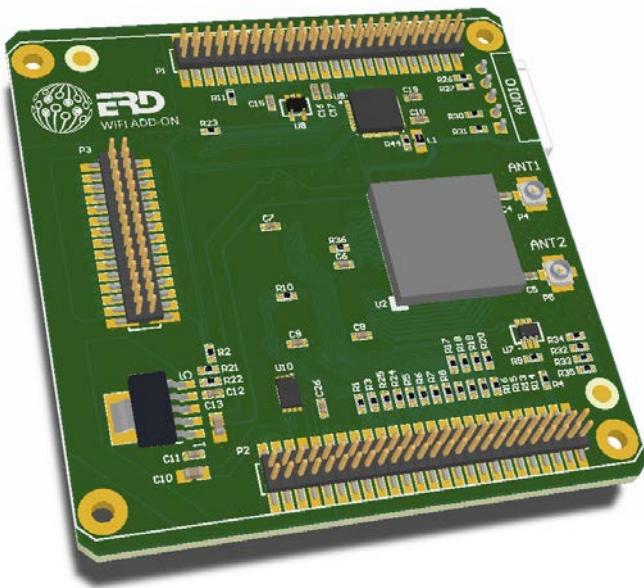




WiFi Stacker Board

The WiFi Stacker Board is an add-on for the Cherry Blossom System On Module.



It has the following features based on the Ti WL1835 module:

- WLAN Baseband Processor and RF Transceiver Support of IEEE Std 802.11b, 802.11g, and 802.11n
- 20- and 40-MHz SISO and 20-MHz 2 x 2 MIMO at 2.4 GHz for High Throughput: 80 Mbps (TCP), 100 Mbps (UDP)
- 2.4-GHz MRC Support for Extended Range
- Fully Calibrated: Production Calibration Not Required
- Wi-Fi Direct Concurrent Operation (Multichannel, Multirole)
- Bluetooth® and Bluetooth low energy
- Bluetooth 4.2
- Host Controller Interface (HCI) Transport for Bluetooth Over UART
- Audio via TLV320AIC3104 With Mic in and HP out

Linux paid support available:



To order the board (and related stacker boards), please contact:



53-57 Yaldwin Road

Hughs Ext

Jetpark, 1459

South Africa

Tel: 011 923 9600

Mail: info@arrow.altech.co.za