



ERD
ELECTRONIC RESEARCH & DESIGN

PO Box 11475

Swartkops, 0051

Tel: 012 663 6930

Fax: 086 663 6930

Email: george@erd.co.za

Reg no: CK96/20530/23

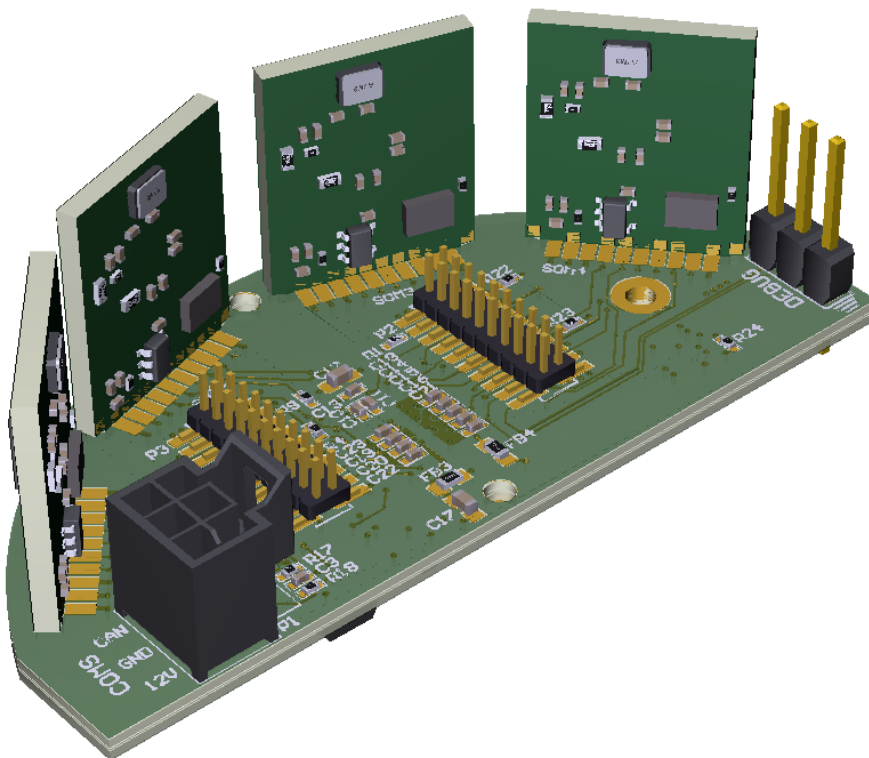
VAT no: 4890166012

Member: George Cerff

ERD μ Stealth Radar Module

The ERD μ Stealth Radar Module is a mmWave Radar board based on Acconeer 60GHz radar devices.

mmWave Radar is an extremely valuable sensing technology for detection of objects and providing the range and velocity of these objects. It is a contactless-technology which operates in the spectrum between 30GHz and 300GHz. Due to the technology's use of small wavelengths it can provide sub-mm range accuracy and is able to penetrate certain materials such as plastic, drywall, clothing, and is impervious to environmental conditions such as rain, fog, dust and snow.



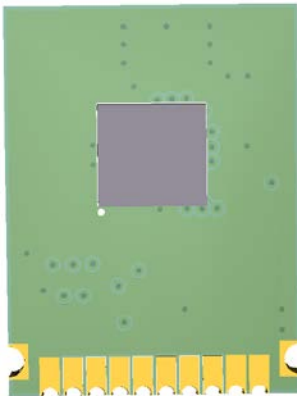


Figure 1 - Radar Sensor

It has the following features:

- 60 GHz Pulsed Coherent Radar (PCR)
- Measures absolute range up to 2 m (mm accurate)
- HPBW of 80 (H-plane) and 40 degrees (E-plane)
- The unit has up to 4 radar sensors to cover up to 180 degrees.
- It uses a Cortex M7 Atmel processor for the processing of radar data.
- P1 (Molex Nanofit connector for power and comms):
 1. RS485 – A
 2. RS485 – B
 3. CANH
 4. VIN (5 -12V DC)
 5. GND
 6. CANL



To order the board, please contact:

ALTRON | **ARROW**

53-57 Yaldwin Road

Hughs Ext

Jetpark, 1459

South Africa

Tel: 011 923 9600

Mail: info@arrow.altech.co.za